

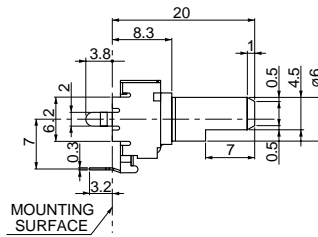
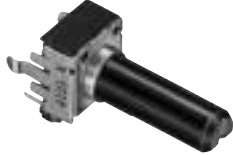
9mm Size Snap-In Insulated Shaft Potentiometers

FEATURES

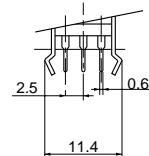
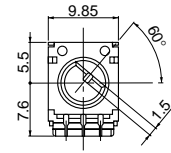
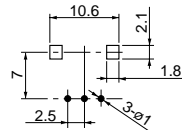
- High performance miniature potentiometer created by incorporating NOBLE's Film Integration Technology.
- Film element provides smooth rotational feeling.

XV092PVN

(Insulated Shaft)

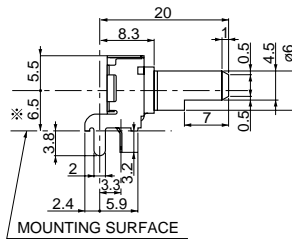
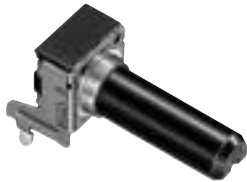


MOUNTING SURFACE
MOUNTING HOLE DIMENSIONS
ON P.C.B (REFERENCE)



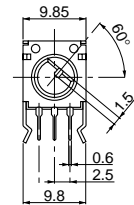
XV092PHPN

(Insulated Shaft)

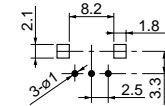


MOUNTING SURFACE

※ Mounting Height=6.5 (PHPN)
10 (PHJN)
12.5 (PHDN)



MOUNTING HOLE DIMENSIONS
ON P.C.B (REFERENCE)



SPECIFICATIONS

Total Rotational Angle	300±5° (280±5° option : Model XV09202)
Rotational Torque	1-8mN·m
Nominal Total Range	5kΩ, 10kΩ, 20kΩ, 50kΩ, 100kΩ, 200kΩ, 500kΩ
Resistance Tolerance	Within ±20% of the nominal total resistance
Resistance Taper	1B, 15A, 15C
Rated Power	0.05W
Maximum Rated Voltage	AC 50V, DC 20V

SHAFT DIMENSIONS

	Type F (Flat type)	Type U (Knurl type)
Shaft Length (L : mm)	15 ○ (ℓ = 6mm) 20 ○ (ℓ = 7mm) 25 ○ (ℓ = 12mm) 30 ○ (ℓ = 12mm)	○ (ℓ = 6mm) ○ (ℓ = 7mm) ○ (ℓ = 7mm)

SHAFT DESIGN

Type F	Type U
<p>MOUNTING SURFACE</p>	<p>MOUNTING SURFACE</p> <p>KNURLED 40 TEETH</p>

XV09203PVN

(Insulated Shaft)
(With Sleeve)



XV09203PHPN

(Insulated Shaft)
(With Sleeve)



• Specifications in this catalog are presented basically for informative purposes.
We request the exchange of official approval drawings before placing order.